

CHRIST EPISCOPAL CHURCH Parish Visitor

Two Emerson Street @ Gregory Boulevard, East Norwalk, Connecticut 06855 203.866.7442
The Reverend Frank Wismer, III Vicar ~ www.christchurcheastnorwalk.org

ORDINARY PEOPLE ✦ EXTRAORDINARY SPIRIT

Dear Friends in Christ,

The early Christian Church did not have a seasonal calendar as we have today. There was no Advent or Christmas season. There weren't the seasons of Epiphany and Pentecost. The Church didn't observe Lent and the actual date for Easter hadn't been established. The first Christians simply met for worship to celebrate the resurrection of Jesus Christ from the dead. Since they were Jewish Christian, they went to the synagogue on Saturday to observe the Sabbath and then met the next day, the first day of the week, when Jesus was raised to new life.

Modern Christians have inherited a very sophisticated and well considered religious calendar. We have six seasons of the church year. We have established dates for Christmas, Pentecost, and Easter. We have the special days of Lent: Ash Wednesday, Maundy Thursday, and Good Friday. The question we might ask ourselves is why does the church observe the liturgical seasons and special holy days throughout the year.

There is one unique aspect of the Christian religion, that to my knowledge is not shared by any other world religion. Namely, we Chris-

tians celebrate an incarnate God. That is to say that we believe that the God we worship took on human form and became like us. God became man in Jesus the Christ so that we might be able to know God more intimately. What the Christian faith invites us to do is to have an interpersonal relationship with a living God. As I said, I can think of no other religion that makes such an invitation. How do we, therefore, engage the risen Lord?



The seasons of our church calendar are designed to assist us in walking through life with Jesus Christ. Nowhere else is this evident than during the Lenten season. Lent invites us to walk with Jesus during the final days of his life.

We are encouraged to shout for joy with his disciples as he enters Jerusalem.

We have a standing invitation to join with him in his last supper and to pray with him in the garden. We may watch as he is condemned to death and stand at the foot of his cross on Good Friday. And, most importantly, we get to walk with Mary to the tomb on Easter morning and discover that he has risen from the dead.

Christianity is not simply a religion of moral values and spiritual ideas. Christianity is a religion whose members engage their God and whose God engages them. Once again, our Christ invites us to walk with him through the events leading up to his passion, death, and resurrection.

IN THIS ISSUE ~ MARCH 2011

Music Notes	Page 2
Vestry Commissioning	Page 2
Ash Wednesday / Lent	Page 2
Who's Who / Mardi Gras	Page 3

God bless,

Father Frank

MUSIC NOTES FROM THE ORGANIST

a monthly message from Betty Belcher

Lent will soon be upon us and this means a definite change in the mood and the type of music that the choir sings on Sunday mornings. There is no Gloria, and instead we sing the Kyrie Eleison, as well as the Sanctus and Agnus Dei from the Franz Schubert Communion Mass. The hymns are more somber in nature and the tone of the anthems also reflects the

solemnity of the season.

In March, the Choir will be singing "Surely God Hath Born Our Grievings", "Blessed Is The Man", "Jesus Savior, Master of All", and a lovely new piece by Mozart entitled "Holy Is God, The Almighty". The Choir also will be singing at the 7:30 p.m., service on Ash Wednesday.

VESTRY COMMISSIONING

March 6th @ 8:00 a.m. and 10:00 a.m.

The Christ Church Vestry that was elected at our Annual Parish Meeting will be commissioned on March 6th. The commissioning of the Vestry members will take place at both the 8 a.m. and 10 a.m. services. Please make

every effort to attend one of these services and support those we have elected to represent the people of Christ Church in the day to day business of our parish.

ASH WEDNESDAY

begin your lenten journey

Lent begins on Ash Wednesday March 9th. Two services of the Holy Eucharist will be held at Christ Church marking the start of Lent. The first service follows the Wednesday morning bible study at 11:30 a.m. The evening service

will begin at 7:30 p.m. The Christ Church choir will be present to lead the singing on Ash Wednesday.

Ashes are imposed during both services for those who desire them.

PLEASE CONTACT DON BURR IF YOU ARE INTERESTED IN PREPARING A SPECIAL BREAKFAST FOR OUR NIGHTLY GUESTS. TARGET DATE FOR THIS IS SUNDAY, MARCH 20 @ 4:00 a.m.

LENTEN STUDY

Mondays in Lent @ 7:00 p.m.

Father Frank will conduct a Lenten Study on the subject of the Beatitudes. The program will be held in the Guild Room on Monday eve-

nings, beginning at 7:00 p.m. Please be in contact with Father Frank for more information. ALL ARE WELCOME!

WHO'S WHO? SANDY KITTREDGE

an occasional feature by Chris Davis

Sandy is a lifelong member of Christ Church, and is loved by all the members who know her, from young to old. She has recently joined the ranks of the Ushers, and is being trained by Judy White. She loves the old hymns and liturgical music that she can sing along with and would love to have more of it. She likes the old traditions in church which make her feel more comfortable.

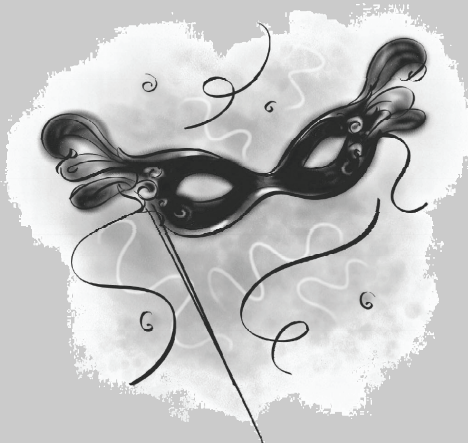


to family and friends. She also does needle point and enjoys baking appetizers and cookies, and helping her mom where she can. Her favorite new thing to do is chat on the computer in chat rooms and on Facebook. She also likes to create her own cards with her own verses from a computer program, which gives them a personal touch and saves her a lot of money.

Outside of church, Sandy likes to crochet and make afghans and baby blankets which she enjoys giving

The next time you see Sandy in church, say "hi" and give her a hug. She truly lights up our church with her wonderful smile.

PLEASE JOIN US FOR A MARDI GRAS POT LUCK SUPPER SATURDAY, MARCH 5, 2011 @ 5:30



Attendees are encouraged to wear green, gold or purple... costumes are optional. There will be a sign-up sheet in the Guild Room.

POC: Judy White

CHRIST EPISCOPAL CHURCH ~ PARISH LIFE CALENDAR

MARCH 2011

Sun	Mon	Tue	Wed	Thu	Fri	Sat
		1 8:30 a.m. Clover Hill School 6:00 p.m. Confirmation Class 7:00 p.m. AA 1 ½ Hour Beginner's Topic OD 8:45 p.m. AA 1 ¼ Hour Beginner's Steps 1-2-3 CST 8:45 p.m. AA 1 ¼ Hour ALL Steps 1-12 CST	2 8:30 a.m.—Noon Clover Hill School 10:30 a.m. Bible Study 2-6:00 p.m. <i>Piano Lessons</i> 7:00 p.m. Pilates	3 8:30 a.m.—Noon Clover Hill School 8:30 p.m. AA 1 ½ Hour As Bill Sees It CD	4 9:30 a.m.—1:30 a.m. Clover Hill School—Growing Together 8:30 p.m. AA 1 ½ Hour Big Book CBB	5 Noon AA 1 Hour 3 Speaker OS 2:30 p.m. <i>Piano Workshops</i> 5:30 p.m. Mardi Gras Pot Luck
6 8:00 a.m. Worship 9:45 a.m. Christian Formation 10:00 a.m. Worship VESTRY COMMISSIONING	7 8:30 a.m.—Noon Clover Hill School 7:00 p.m. Lenten Study 7:30 p.m. AA 45 min. Traditions CTD 8:30 p.m. AA 1 Hour 3 Speaker OS	8 8:30 a.m. Clover Hill School 6:00 p.m. Confirmation Class 7:00 p.m. AA 1 ½ Hour Beginner's Topic OD 8:45 p.m. AA 1 ¼ Hour Beginner's Steps 1-2-3 CST 8:45 p.m. AA 1 ¼ Hour ALL Steps 1-12 CST	9 ASH WEDNESDAY 8:30 a.m.—Noon Clover Hill School 10:30 a.m. Bible Study 11:30 a.m. Imposition of Ashes 2-6:00 p.m. <i>Piano Lessons</i> 7:30 p.m. Imposition of Ashes	10 8:30 a.m.—Noon Clover Hill School 8:30 p.m. AA 1 ½ Hour As Bill Sees It CD	11 9:30 a.m.—1:30 a.m. Clover Hill School—Growing Together 8:30 p.m. AA 1 ½ Hour Big Book CBB	12 Noon AA 1 Hour 3 Speaker OS
13 8:00 a.m. Worship 9:45 a.m. Christian Formation 10:00 a.m. Worship	14 8:30 a.m.—Noon Clover Hill School 7:00 p.m. Vestry Meeting 7:30 p.m. AA 45 min. Traditions CTD 8:30 p.m. AA 1 Hour 3 Speaker OS	15 8:30 a.m. Clover Hill School 6:00 p.m. Confirmation Class 7:00 p.m. AA 1 ½ Hour Beginner's Topic OD 8:45 p.m. AA 1 ¼ Hour Beginner's Steps 1-2-3 CST 8:45 p.m. AA 1 ¼ Hour ALL Steps 1-12 CST	16 8:30 a.m.—Noon Clover Hill School 8:30 a.m. Staff Meeting 10:30 a.m. Bible Study 2-6:00 p.m. <i>Piano Lessons</i> 7:00 p.m. Pilates	17 8:30 a.m.—Noon Clover Hill School 8:30 p.m. AA 1 ½ Hour As Bill Sees It CD DEADLINE FOR APRIL PARISH VISITOR ~ THANKS!	18 9:30 a.m.—1:30 a.m. Clover Hill School—Growing Together 8:30 p.m. AA 1 ½ Hour Big Book CBB	19 Noon AA 1 Hour 3 Speaker OS
20 4:00 a.m. Parish Breakfast 8:00 a.m. Worship 9:45 a.m. Christian Formation 10:00 a.m. Worship	21 8:30 a.m.—Noon Clover Hill School 7:00 p.m. Lenten Study 7:30 p.m. AA 45 min. Traditions CTD 8:30 p.m. AA 1 Hour 3 Speaker OS	22 8:30 a.m. Clover Hill School 10:30 a.m. Honey Hill Care Center 6:00 p.m. Confirmation Class 7:00 p.m. AA 1 ½ Hour Beginner's Topic OD 8:45 p.m. AA 1 ¼ Hour Beginner's Steps 1-2-3 CST 8:45 p.m. AA 1 ¼ Hour ALL Steps 1-12 CST	24 8:30 a.m.—Noon Clover Hill School 8:30 p.m. AA 1 ½ Hour As Bill Sees It CD	25 9:30 a.m.—1:30 a.m. Clover Hill School—Growing Together 8:30 p.m. AA 1 ½ Hour Big Book CBB	26 Noon AA 1 Hour 3 Speaker OS 4:00 p.m.—9:00 p.m. Al Madany Islamic Center Community Gathering	
27 8:00 a.m. Worship 9:45 a.m. Christian Formation 10:00 a.m. Worship	28 8:30 a.m.—Noon Clover Hill School 7:00 p.m. Lenten Study 7:30 p.m. AA 45 min. Traditions CTD 8:30 p.m. AA 1 Hour 3 Speaker OS	29 8:30 a.m. Clover Hill School 6:00 p.m. Confirmation Class 7:00 p.m. AA 1 ½ Hour Beginner's Topic OD 8:45 p.m. AA 1 ¼ Hour Beginner's Steps 1-2-3 CST 8:45 p.m. AA 1 ¼ Hour ALL Steps 1-12 CST	30 8:30 a.m.—Noon Clover Hill School 10:30 a.m. Bible Study 2-6:00 p.m. <i>Piano Lessons</i> 7:00 p.m. Pilates	31 8:30 a.m.—Noon Clover Hill School 8:30 p.m. AA 1 ½ Hour As Bill Sees It CD		

AA Meetings Legend: CTD = Closed, Tradition, Discussion; OS = Open, Speaker; OD = Open, Discussion; CST = Closed, Step, Discussion; CBB = Closed, Big Book